

# IF YOU HAVE COVID SYMPTOMS

🌐 [Link to resource webpage](#)

📄 [Link to another flow chart](#)

**START**  
DO YOU HAVE COVID SYMPTOMS?

Yes

Get tested

Isolate (see below "You need to isolate" for directions.)  
Monitor your health, wear a mask.  
Think about the people you have recently been around.

While waiting for results, wear a mask and consider vaccination.

Test Positive?

Yes

You need to isolate.

Do you live on Campus?

Yes

Return home for isolation.

Isolate per CDC and Georgia Department of Public Health Guidelines.

No

Isolate per CDC and Georgia Department of Public Health Guidelines.\*

Self report to GSU online.

If there are extenuating circumstances preventing you from returning home, contact GSU Housing at 404-413-1800 or [housingcovid@gsu.edu](mailto:housingcovid@gsu.edu).

Request time off work or class.

**CLASS:** Submit documentation of medical need for an excused absence because of illness or quarantine to the Dean of Students.

**WORK:** Contact your supervisor.

**STUDENTS:** Yes, submit a request for financial hardship and emergency assistance to the Dean of Students.

**FACULTY/STAFF:** Yes, contact Benefits in Human Resources about possible leave options if needed. They can be reached at 404-413-3330 or [benefits@gsu.edu](mailto:benefits@gsu.edu).

No

Have you had contact with someone who has COVID-19 or is presumed to have it?

Yes

Refer to COVID exposure flowchart.

No

Practice good hygiene, follow CDC, Georgia Department of Health and GSU guidelines, stay safe and healthy. Consider vaccination.

No

Follow-up with a healthcare provider as necessary for any continuing or worsening symptoms. Students schedule an appointment with the Student Health Clinic.

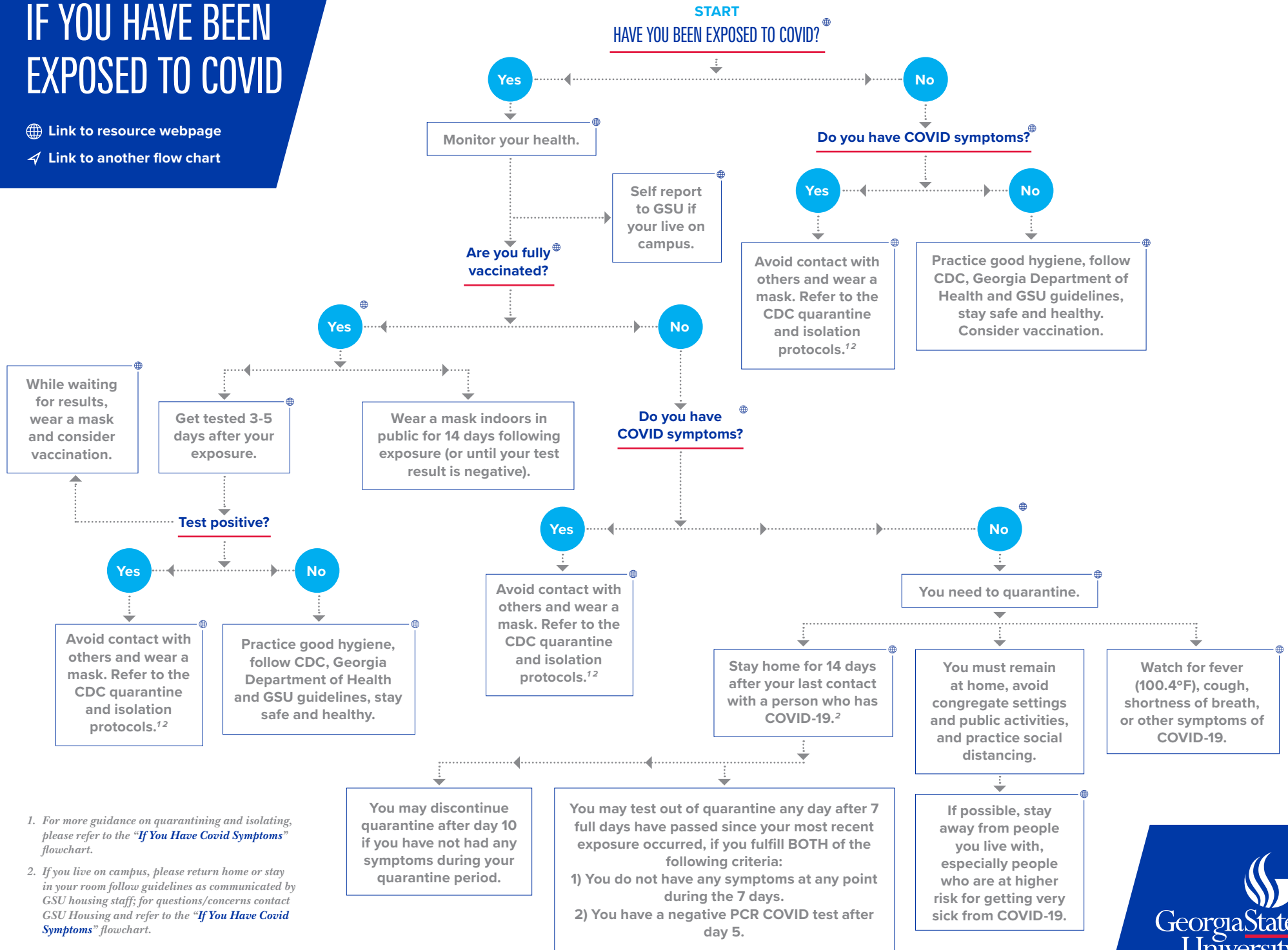
Practice good hygiene, follow CDC, Georgia Department of Health and GSU guidelines, stay safe and feel better soon. Consider vaccination.

\* For assistance in determining when you should return to work/class: [GA DPH's Quarantine Calculator](#)

# IF YOU HAVE BEEN EXPOSED TO COVID

[Link to resource webpage](#)

[Link to another flow chart](#)

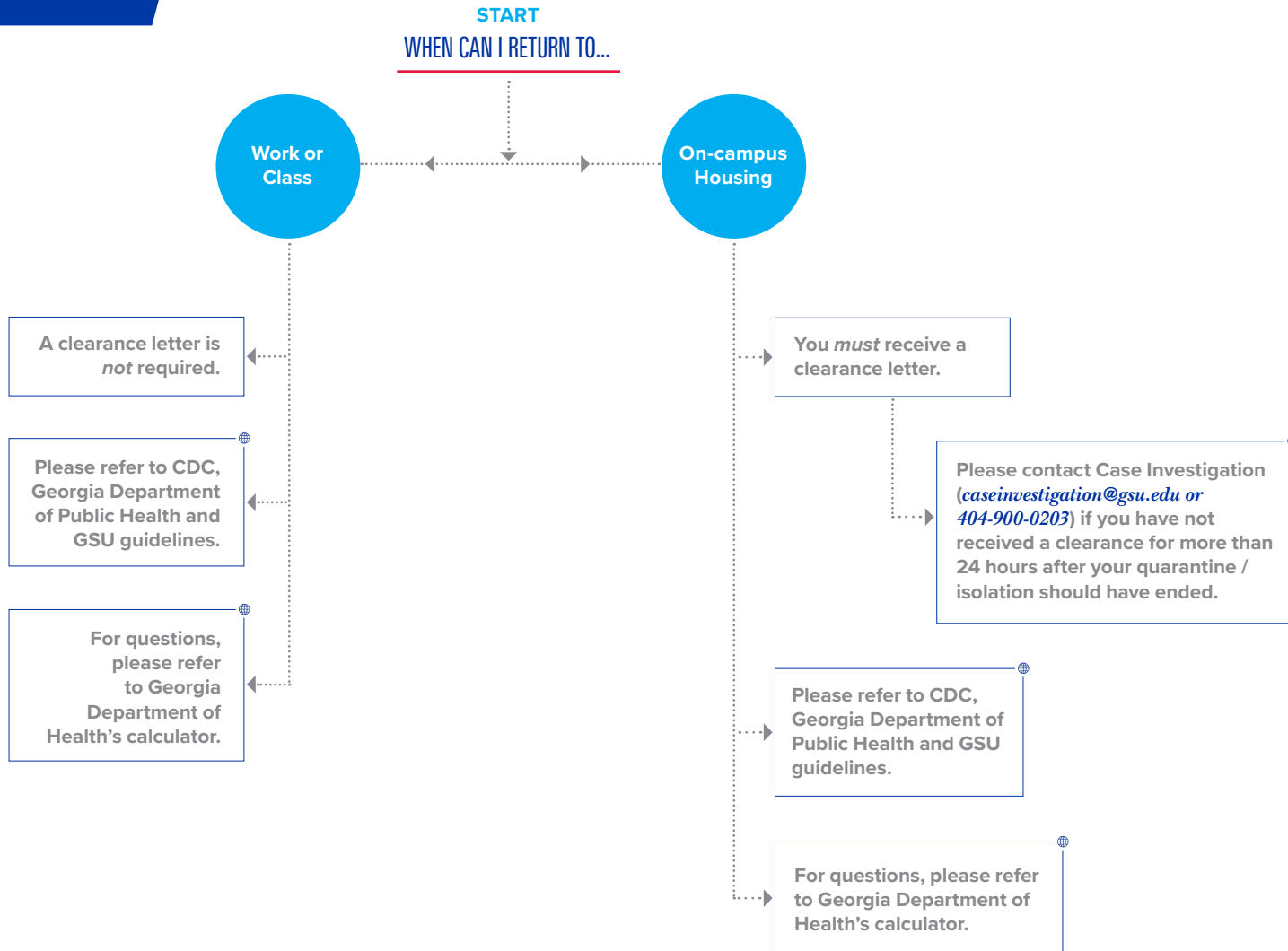


1. For more guidance on quarantining and isolating, please refer to the "If You Have Covid Symptoms" flowchart.  
 2. If you live on campus, please return home or stay in your room follow guidelines as communicated by GSU housing staff; for questions/concerns contact GSU Housing and refer to the "If You Have Covid Symptoms" flowchart.

# WHEN CAN I RETURN?

🌐 Link to resource webpage

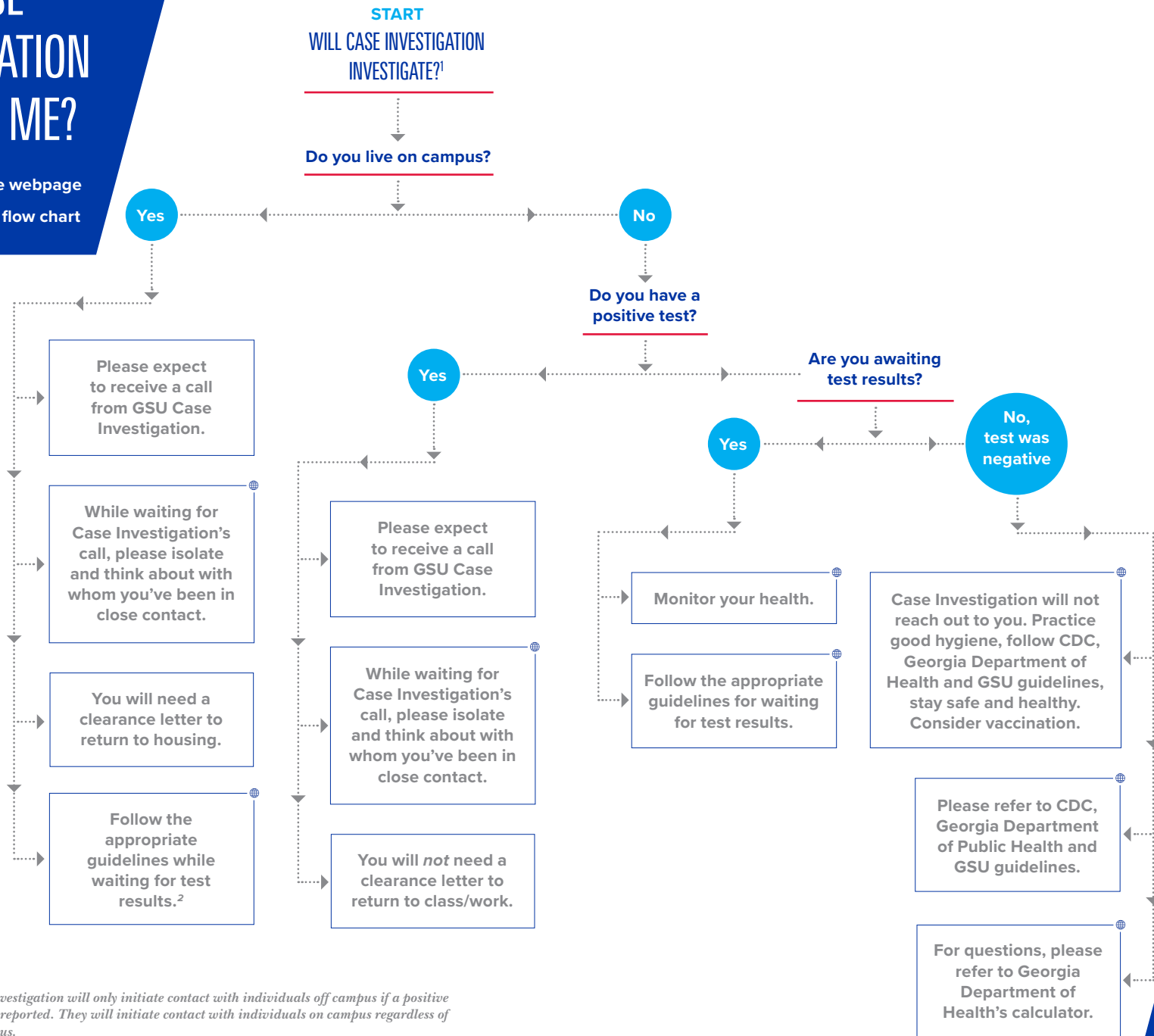
📄 Link to another flow chart



# WILL CASE INVESTIGATION CONTACT ME?

🌐 [Link to resource webpage](#)

📄 [Link to another flow chart](#)



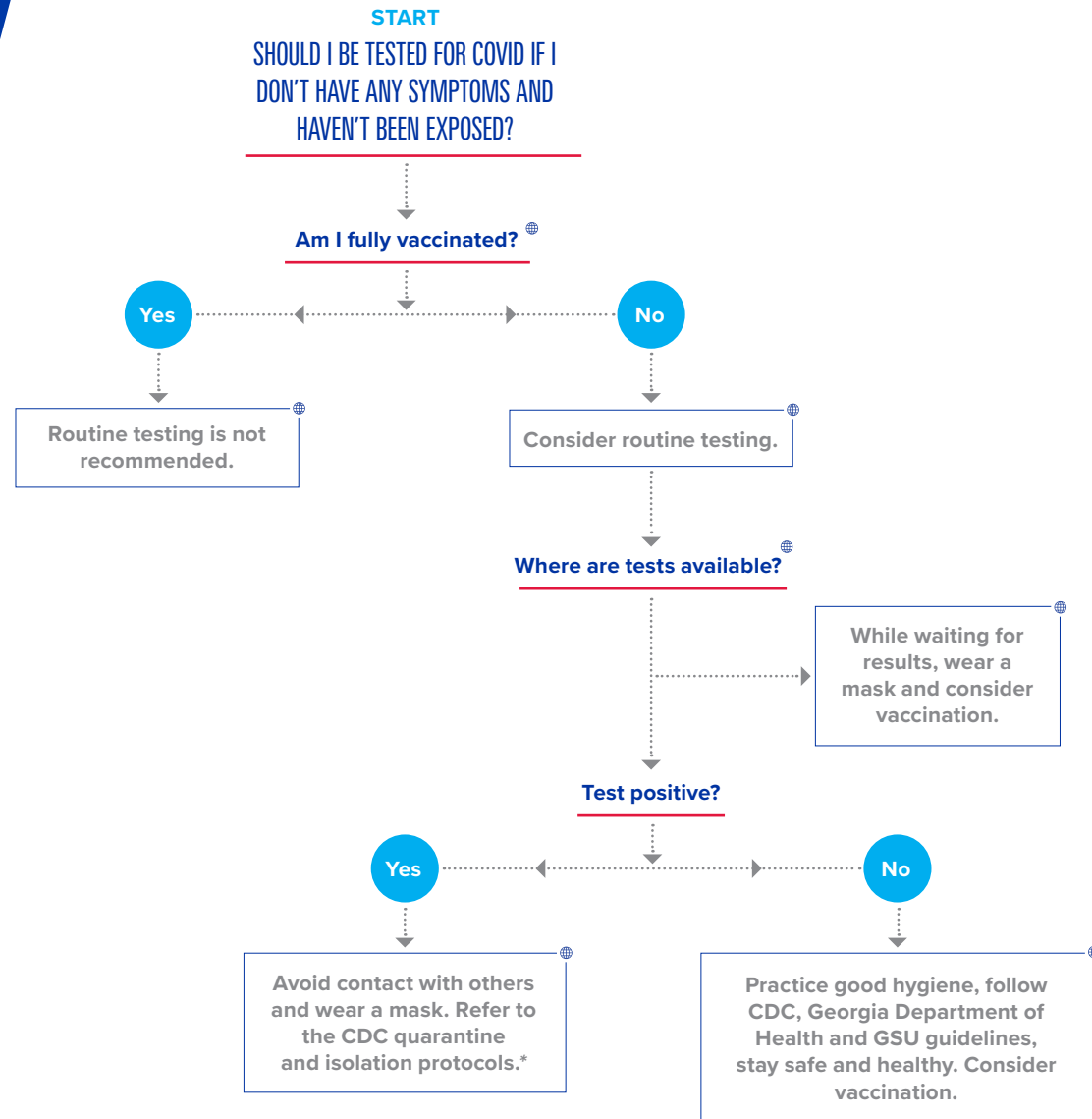
1. Georgia State Case Investigation will only initiate contact with individuals off campus if a positive COVID case has been reported. They will initiate contact with individuals on campus regardless of their COVID case status.

2. This applies if you have a positive test, symptoms or have been exposed.

# DO I NEED A SCREENING TEST?

 [Link to resource webpage](#)

 [Link to another flow chart](#)

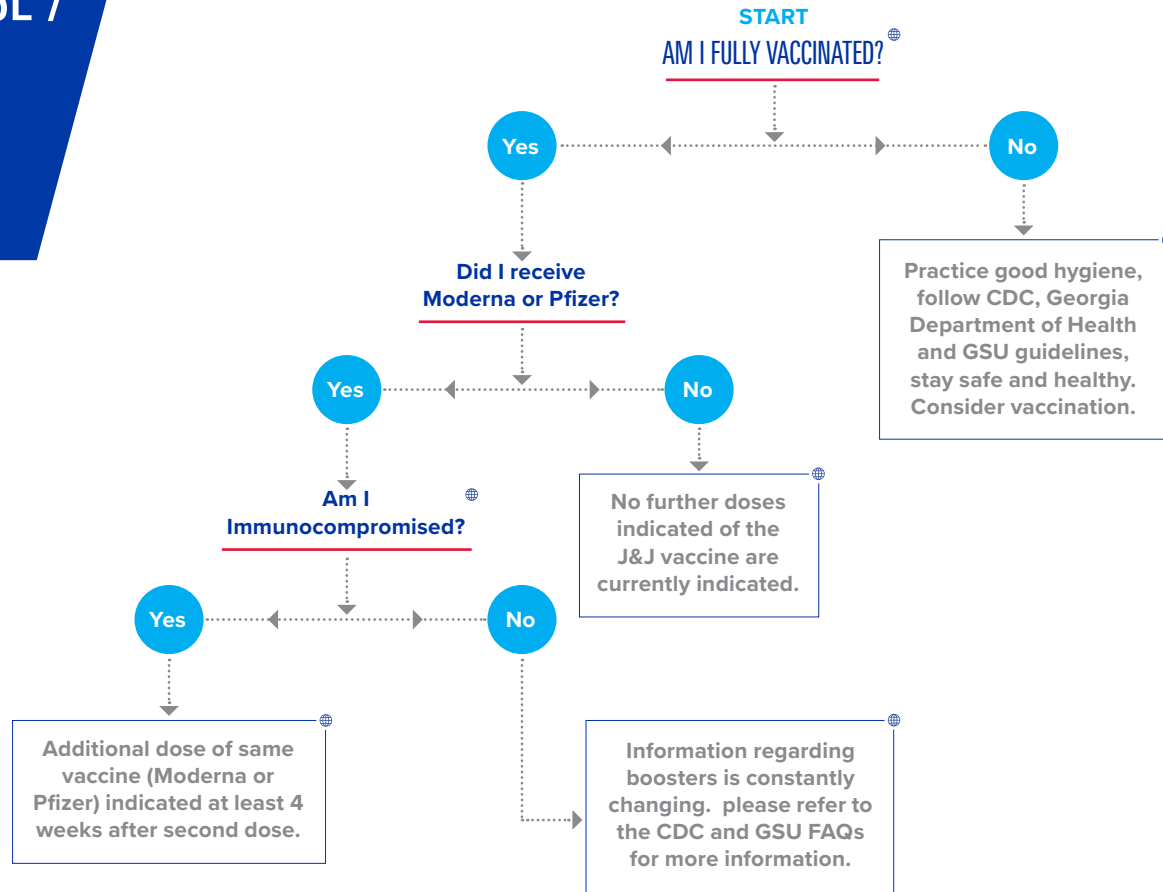


\* If you live on campus, please return home or stay in your room follow guidelines as communicated by GSU housing staff; for questions/concerns contact GSU Housing and refer to the "If You Have Covid Symptoms" flowchart.

# DO I NEED AN ADDITIONAL DOSE / BOOSTER SHOT?

 [Link to resource webpage](#)

 [Link to another flow chart](#)



# ADDITIONAL RESOURCES

## DEFINITIONS

**QUARANTINE:** Might have been exposed to the virus.

**ISOLATE:** Infected with the virus, even if you don't have symptoms.

**ADDITIONAL DOSE:** Sometimes people who are moderately to severely immunocompromised do not build enough (or any) protection when they first get a vaccination. When this happens, getting another dose of the vaccine can sometimes help them build more protection against the disease.

**BOOSTER SHOT:** Another dose of a vaccine that is given to someone who built enough protection after vaccination, but then that protection decreased over time (this is called waning immunity).

**CLOSE CONTACTS / EXPOSED TO COVID:** Someone who was within **6 feet** for a **total of 15 minutes or more** within **2 days** prior to illness onset, regardless of whether the contact was wearing a mask.

## COVID SYMPTOMS

**CDC SELF-CHECKER:** [www.cdc.gov/coronavirus/2019-ncov/symptoms-testing/coronavirus-self-checker.html](http://www.cdc.gov/coronavirus/2019-ncov/symptoms-testing/coronavirus-self-checker.html)

**CDC LIST OF SYMPTOMS:** <https://www.cdc.gov/coronavirus/2019-ncov/symptoms-testing/symptoms.html>

**GEORGIA DEPARTMENT OF HEALTH:** <https://dph.georgia.gov/what-covid-19>

## TESTING AND SCREENING

### TESTING

**GSU:** <https://covidinfo.gsu.edu/covid-19-resources/covid-19-testing/>

**GA DPH:** <https://dph.georgia.gov/covid-19-testingdirect-patient-lines>

### WHILE WAITING FOR COVID TEST RESULTS

**CDC:** [https://www.cdc.gov/csels/dls/locs/2020/guidance\\_for\\_individuals\\_who\\_are\\_waiting\\_for\\_covid-19\\_test\\_results.html](https://www.cdc.gov/csels/dls/locs/2020/guidance_for_individuals_who_are_waiting_for_covid-19_test_results.html)

**CDC - Testing Overview:** <https://www.cdc.gov/coronavirus/2019-ncov/hcp/testing-overview.html>

**GA DPH:** <https://dph.georgia.gov/covidtesting>

### SCREENING TESTS:

**CDC - Testing strategies:** <https://www.cdc.gov/coronavirus/2019-ncov/lab/resources/sars-cov2-testing-strategies.html>

**CDC - Symptoms testing:** <https://www.cdc.gov/coronavirus/2019-ncov/symptoms-testing/testing.html>

**CDC - Testing at colleges and universities:** <https://www.cdc.gov/coronavirus/2019-ncov/community/colleges-universities/ihe-testing.html>

**FDA - Establishing testing programs:** <https://www.fda.gov/medical-devices/coronavirus-covid-19-and-medical-devices/screening-covid-19-deciding-which-test-use-when-establishing-testing-programs>

## SELF-MONITORING AND REPORTING

### SELF-MONITORING

**GA DPH:** <https://intake-app-dot-gdph-erm-274415.appspot.com/>

### ONLINE REPORTING

**GSU:** <https://cc-gsu.force.com/s/>

## CASE INVESTIGATION

### CASE INVESTIGATION CONTACTS

Email: [caseinvestigation@gsu.edu](mailto:caseinvestigation@gsu.edu)

Phone: 404-900-0203

## GEORGIA STATE UNIVERSITY RESOURCES

### HOUSING

Email: [housingcovid@gsu.edu](mailto:housingcovid@gsu.edu)

Phone: 404-413-1800

### GEORGIA STATE STUDENT HEALTH TELEHEALTH SCHEDULING

Patient Portal: <https://www.gse.medicatconnect.com>

Phone: 404-413-1930

**CLASS ABSENCE NOTIFICATION:** <https://deanofstudents.gsu.edu/student-assistance/professor-absence-notification/>

**STUDENT FINANCIAL ASSISTANCE:** <https://deanofstudents.gsu.edu/student-assistance/>

**STUDENT EMERGENCY WITHDRAWAL:** <https://deanofstudents.gsu.edu/student-assistance/emergency-withdrawal/>

### FACULTY / STAFF ASSISTANCE

Email: [benefits@gsu.edu](mailto:benefits@gsu.edu)

Phone: 404-413-3330

## ISOLATION AND QUARANTINE PROTOCOLS

**CDC ISOLATION PROTOCOL:** <https://www.cdc.gov/coronavirus/2019-ncov/your-health/quarantine-isolation.html#isolation>

**CDC QUARANTINE PROTOCOL:** <https://www.cdc.gov/coronavirus/2019-ncov/your-health/quarantine-isolation.html#quarantine>

**GA DPH ISOLATION PROTOCOL:** <https://dph.georgia.gov/contact>

**HOW LONG TO BE QUARANTINED:** <https://dph.georgia.gov/covid-quarantine-calculator>

## CDC PROTOCOLS FOR THE FULLY VACCINATED

### FULLY VACCINATED DEFINITION

**CDC definition:** <https://www.cdc.gov/coronavirus/2019-ncov/vaccines/fully-vaccinated.html>

**Different vaccines:** <https://www.cdc.gov/coronavirus/2019-ncov/vaccines/different-vaccines.html>

### FULLY VACCINATED EXPOSED TO COVID / "QUARANTINE":

**CDC definition:** <https://www.cdc.gov/coronavirus/2019-ncov/vaccines/fully-vaccinated.html>

## RETURNING TO WORK / SCHOOL

**CDC:** <https://www.cdc.gov/coronavirus/2019-ncov/hcp/disposition-in-home-patients.html>

### GA DPH

**Returning to work after COVID:** <https://dph.georgia.gov/document/document/dph-covid-19-return-work-guidance-after-covid-19-illness-or-exposure-persons-not/download>

**For healthcare personnel:** <https://dph.georgia.gov/document/document/dph-return-work-guidance/download>

## VACCINES INCLUDING THIRD DOSES

**IMMUNOCOMPROMISED DEFINITION:** <https://www.cdc.gov/coronavirus/2019-ncov/vaccines/recommendations/immuno.html>

### ADDITIONAL DOSES

**Immunocompromised:** <https://www.cdc.gov/coronavirus/2019-ncov/vaccines/recommendations/immuno.html>

**Booster shots:** <https://www.cdc.gov/coronavirus/2019-ncov/vaccines/booster-shot.html>

### WHERE TO GET VACCINES

**GA DPH:** <https://www.coreresponse.org/covid-19/atlanta-ga>

# ADDITIONAL RESOURCES

## VACCINES INCLUDING THIRD DOSES

**USG:** <https://www.usg.edu/vaccination>

**GSU:** <https://covidinfo.gsu.edu/covid-19-resources/covid-19-vaccine/>

## GENERAL GUIDANCE AND FAQs

**CDC**

**Main:** <https://www.cdc.gov/coronavirus/2019-ncov/index.html>

**FAQs:** <https://www.cdc.gov/coronavirus/2019-ncov/faq.html>

**GA DHP**

**Main:** <https://dph.georgia.gov/dph-covid-19-guidance>

**FAQs:** <https://dph.georgia.gov/covid-19-vaccine-general-faq>

**GSU**

**Main:** <https://covidinfo.gsu.edu/>

**FAQs:** <https://covidinfo.gsu.edu/faqs/>